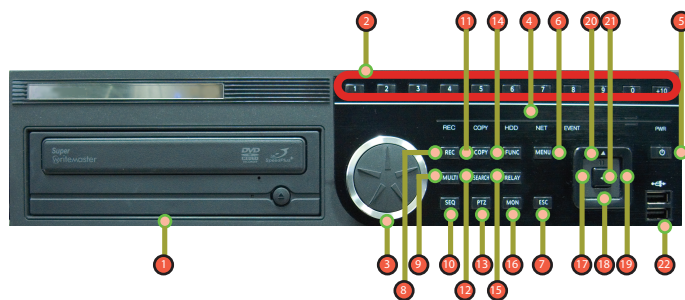


## DVR Quick Guide(4ch/8ch/16ch)



### Jog/Shuttle

1. Forward/Reverse 1 to 64 times
2. Step playback (1 Frame)



### Button Name

- |                |                |
|----------------|----------------|
| 1. DVD         | 12. Search     |
| 2. Channel     | 13. PTZ        |
| 3. Jog Shuttle | 14. FUNC       |
| 4. LED         | 15. Relay      |
| 5. Power       | 16. Mon        |
| 6. Menu        | 17. REW/◀      |
| 7. ESC         | 18. Stop/▼     |
| 8. REC         | 19. FWD/▶      |
| 9. Multi       | 20. Pause/⏸    |
| 10. SEQ        | 21. Play/Enter |
| 11. Copy       | 22. USB        |

## Front / Search

### 1. Monitoring

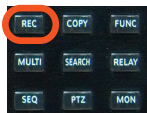


#### Multi Conversion

With pushing Multi button, convert screen into 4/9/16.

#### Single Conversion

In division screen, If pushing the channel button, its channel will be shown in single screen.



#### User recording start

If Manual & Event is configured on recording configuration, when user pushes REC button of the front panel, recording will work.

### 2. Playback



#### Playback

Push Playback button in Monitoring mode.



#### Forward Playback

If pushing FWD button, forward Playback speed will be changed from 2 to 64 times in Monitoring / Playback mode.



#### Reverse Playback

If pushing REW button, Reverse Playback speed will be changed from 2 to 64 times in Monitoring / Playback mode.

### 3. Search

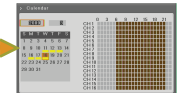


#### Thumbnail Search

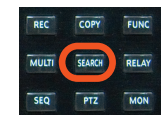
#### Event Search



#### Time Search



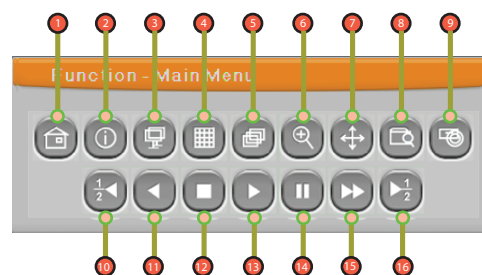
#### Calendar Search



Push SEARCH button

### General Func.

1. Main Menu
2. Information
3. Monitor
4. Display
5. Sequence
6. D-Zoom
7. PTZ
8. Search
9. Copy



### Playback Func.

10. 1/2 REW
11. REW
12. Stop
13. Play
14. Pause
15. FWD
16. 1/2 FWD

## Recording/Event/Copy

### 4. Recording Configuration



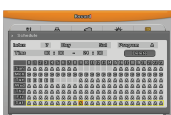
#### Program configuration

Choose default set value or user configuration value.



#### Manula/Schedule & Event

Select and use between Manula & Event and Schedule & Event.



#### Schedule configuration

Input programme per day and time. No recording part will be blank.

### 5. Event



#### Event Check

When configuring Event Check as Always Time Zone, it works.



#### Motion Detection

User can configure the sensitivity and area per channel different.



#### Sensor Input

Choose correct sensor type between N.O type and N.C type.

### 6. Copy



#### CD/DVD Copy

User can copy multiple channel in to CD/DVD-R even including Mini Player together.



#### RE4 Copy

User can copy multiple channel into USB Memory at the same time even including Mini Player.



#### AVI Copy

Selected single channel can be copied into USB Memory.